

**IL34 Antibody**  
**Purified Mouse Monoclonal Antibody**  
**Catalog # AO1424a****Specification**

---

**IL34 Antibody - Product Information**

Application	WB, FC, ICC, E
Primary Accession	<a href="#">Q6ZMJ4</a>
Reactivity	Human
Host	Mouse
Clonality	Monoclonal
Isotype	IgG1
Calculated MW	27.5kDa KDa

**Description**

Cytokine that promotes the differentiation and viability of monocytes and macrophages. Stimulates phosphorylation of MAPK1/ERK2 AND MAPK3/ERK1. Ligand for colony-stimulating factor-1 receptor CSF1R. Tissue specificity: Detected in the sinusoidal epithelium in the red pulp of spleen (at protein level). Predominantly expressed in spleen. Also detected in a range of other tissues including heart, brain, lung, liver, kidney, thymus, testis, ovary, small intestine, prostate and colon.

**Immunogen**

Purified recombinant fragment of human IL34 expressed in E. Coli.

**Formulation**

Ascitic fluid containing 0.03% sodium azide. <br />

**IL34 Antibody - Additional Information**

**Gene ID** 146433

**Other Names**

Interleukin-34, IL-34, IL34, C16orf77

**Dilution**

WB~~1/500 - 1/2000

FC~~1/200 - 1/400

ICC~~N/A

E~~N/A

**Storage**

Maintain refrigerated at 2-8°C for up to 6 months. For long term storage store at -20°C in small aliquots to prevent freeze-thaw cycles.

**Precautions**

IL34 Antibody is for research use only and not for use in diagnostic or therapeutic procedures.

**IL34 Antibody - Protein Information**

**Name** IL34

**Synonyms** C16orf77

**Function**

Cytokine that promotes the proliferation, survival and differentiation of monocytes and macrophages. Promotes the release of pro-inflammatory chemokines, and thereby plays an important role in innate immunity and in inflammatory processes. Plays an important role in the regulation of osteoclast proliferation and differentiation, and in the regulation of bone resorption. Signaling via CSF1R and its downstream effectors stimulates phosphorylation of MAPK1/ERK2 AND MAPK3/ERK1.

**Cellular Location**

Secreted.

**Tissue Location**

Detected in the sinusoidal epithelium in the red pulp of spleen (at protein level). Predominantly expressed in spleen Also detected in a range of other tissues including heart, brain, lung, liver, kidney, thymus, testis, ovary, small intestine, prostate and colon.

**IL34 Antibody - Protocols**

Provided below are standard protocols that you may find useful for product applications.

- [Western Blot](#)
- [Blocking Peptides](#)
- [Dot Blot](#)
- [Immunohistochemistry](#)
- [Immunofluorescence](#)
- [Immunoprecipitation](#)
- [Flow Cytometry](#)
- [Cell Culture](#)

**IL34 Antibody - Images**

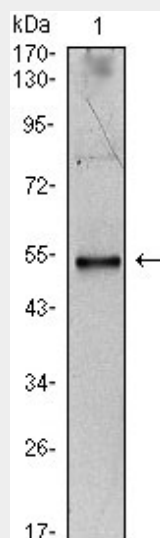


Figure 1: Western blot analysis using IL34 mAb against IL34-hlgGfc transfected HEK293 cell

lysate.

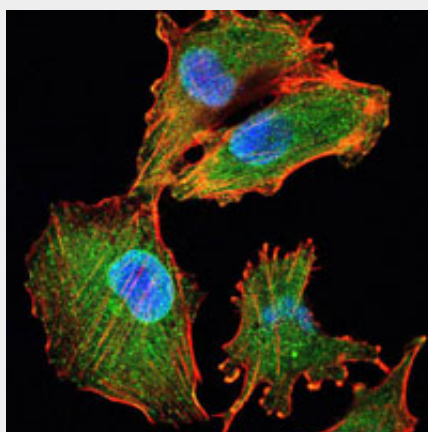


Figure 2: Immunofluorescence analysis of U251 cells using IL34 mouse mAb (green). Blue: DRAQ5 fluorescent DNA dye. Red: Actin filaments have been labeled with Alexa Fluor-555 phalloidin.

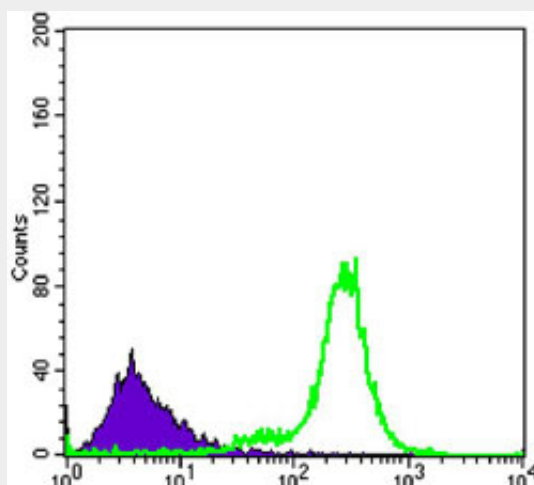


Figure 3: Flow cytometric analysis of K562 cells using IL34 mouse mAb (green) and negative control (purple).

### IL34 Antibody - References

1. Strausberg RL, et al. Proc Natl Acad Sci U S A, 2002 Dec 24.
2. Lim J, et al. Cell, 2006 May 19.
3. Lin H, et al. Science, 2008 May 9.